

THE ARCHIMEDEAN

August - September 1990

The newsletter for users of Computer Concepts' Archimedes products

Impression 2

A Major Upgrade for the Leading Archimedes Document Processing and DTP program

Computer Concepts' Impression will shortly be upgraded to version 2, further strengthening its position as market leader for document processing and page make-up on the Archimedes.

Exceeding the promise made to version 1 purchasers to provide a free upgrade to version 1.1, a free upgrade to the Impression 2 program will be supplied to all registered owners.

Among the new features provided by Impression 2 is the ability to rotate graphics instantly. No other Archimedes DTP program offers this feature, and it will be extremely difficult to match in terms of sheer speed. "Rotating Draw files is

relatively trivial," said Charles Moir, Managing Director of Computer Concepts, "but fast rotation of sprites such as those produced by scanners is a different matter altogether. A sample sprite rotation which takes over ten minutes in !Paint happens instantly in Impression 2."

Other important new features include the ability to select and move multiple text and graphics frames, and a shortcut way to define styles. These facilities alone will greatly increase productivity.

"We hope to launch at the Acorn User show, but the priority is to ensure that the program is tested and reliable" said Moir.

See feature on pages 4-5

LaserDirect

The powerful laser that won't burn a hole in your pocket!

A good laser printer is an essential element in achieving good quality desktop published documents.

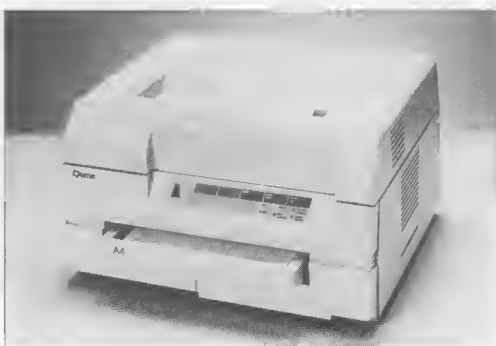
The Computer Concepts LaserDirect system offers the best all-round printer available for the Archimedes, and of

course you can be sure that it is totally compatible with Impression.

LaserDirect is based on the popular Qume mechanism, renowned for its reliability, offering excellent 300dpi print quality and an extremely compact desk top size - just 42cm x 42cm base area.

The package has been designed specifically for the Archimedes and includes the laser printer itself, a custom made interface and driver software. All this comes in a complete package, ready to plug-in and run, for £999 + VAT.

The LaserDirect driver software has been specially developed after research and development into PostScript and the ...continued on page 2



CONTENTS

Comment!

Comparing prices of Archimedes and Mac systems is quite an eye opener.

LaserDirect

The Computer Concepts laser printer offers the best performance available.

Scan-light Plus

Details of the new version of scanner software, and upgrades for existing users.

See us at Acorn User

What's on show from Computer Concepts at this year's Acorn User Show?

Impression 2

The new version of Impression will have many important new features - and registered users will receive a software upgrade free of charge. Take a look at some of the new features on offer, and how to obtain a free upgrade from Impression.

Impression Junior

Impression provides powerful DTP facilities, but not everyone needs that level of sophistication: Impression junior offers great value and simplified features.

Hints & Tips

In this issue we devote the whole section to an initial collection of Impression hints & tips from Computer Concepts' technical support team, including:-

Unwanted Line Breaks

What is the new SuperSample Module?

Renaming Impression Documents

Creating a custom setup for your own printer

Printing on A4 paper

Linking text or graphics frames

Adjust clicking - the forgotten shortcut

Saving on disk space for standard letters

Printing side-by-side

Outlining Fonts

A look at fonts for the Archimedes, including the first sets in a new collection of fonts on offer from Computer Concepts.

2

3

4

5

6

7

8

Comment !

How does the price of an Archi system compare with a similar Mac system? Charles Moir takes a look...



The Apple Macintosh created the DTP revolution and is still leading the maturing market today. But while the Mac is an excellent system for top-end professional publishing including full colour work, systems and software sell for prices which would make your bank manager quake in his boots.

Colour publishing is developing fast on Mac systems - no longer do you have to spend £250,000; you can make a start in colour publishing with the Mac for only about £100,000 !!

The point is that colour accounts for only a small part of a much larger publishing market; even today the majority of publishing is still in black and white. For users whose requirement lies here, the Archimedes offers an ideal solution.

Since most of you will already be using an Archimedes and Impression there's no need to persuade you of the benefits. However, it's interesting to make a comparison between the current market leader (Macintosh) and a similar Archimedes system. I always knew that Mac systems were expensive, but even I was surprised at just how much more a system costs.

In creating the price table (above-right) I have tried to be as fair as possible. Each is a complete black and white publishing system including computer, software, scanner and laser printer.

The conclusion is that for black and white publishing, the Mac system costs over £10,000 while a comparable Archimedes system costs under £5,000.

You have only to attend a Mac User show to find out that pricing attitudes are quite different in the Macintosh market. There are three main publishing packages available for the Mac - QuarkXPress, PageMaker and Design Studio. These packages retail at £695 for the first two and £795 for Design Studio! Can you imagine the reaction if we announced that Impression was to cost £695? I don't think we'd be crushed in the stampede.

This pricing attitude is carried over to all add-ons. Laser printers regularly cost in excess of £3,000 and grey scale scanners (for photographs) start at around £1,300. A really low-cost utility is something that costs less than £100!

As you can see from this issue of the Archimedean, produced entirely with Impression, when it comes to black and white or two colour publishing, we can produce results every bit as good as those from the Mac.



A complete Archimedes DTP system costs less than half the price of a similar Mac system

Comparing Prices

Mac system	RRP	Archimedes	RRP
Mac IIfx, 4MByte, 40MByte HD	£4,045	Arc. 440, 40MByte HD, ARM3	£2,448
LaserWriter IINT	£3,595	LaserDirect	£999
300 dpi mono A4 scanner	£1,295	400 dpi A4 Scan-light & feeder	£499
DTP software	£695	Impression 2	£169
14" monitor	£430	14" multi-sync	£350
Total	£10,060	Total	£4,465

These prices are RRP, although both systems are available for less if you shop around.

LaserDirect

... continued from front cover

associated outline font drawing routines. The *FastText* system used by LaserDirect employs optimised text printing routines which offer several major advantages over the standard Acorn equivalents used by other manufacturers.

FastText converts from font outlines to the printed characters very much faster than the Acorn routines, resulting in an average speed increase of approximately 100%, as shown in the graph below-right for three sample documents.

But perhaps the most surprising aspect of FastText is that it offers this huge speed increase without increased memory requirements - quite the contrary in fact. FastText operates more efficiently and actually requires less memory than when using the Acorn routines. Sceptical users may be interested to know that you can use LaserDirect with the standard Acorn font drawing software at any time, so you can test the speed and capability differences for yourself! Why not ask your dealer to print one of your files through the different systems for comparison?

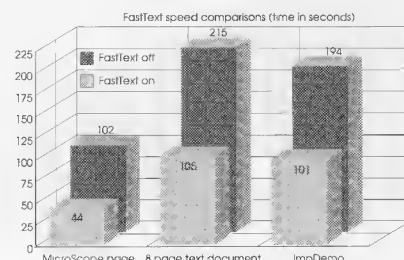
LaserDirect Hi-Res

Computer Concepts are currently working on the LaserDirect Hi-Res system for Canon LPB4 laser printers. This will be a high performance interface card, driving the new Canon 4 page per minute laser at a staggering 600dpi resolution.

More information

Further details and printed samples are available upon request direct from Computer Concepts.

The graph shows the speed difference gained by using FastText on three typical pages



Scan-Light Plus

Upgrade Summary

- Totally compatible with all aspects of RISC-OS
- Extensive image-enhancement facilities, including : brightness and contrast controls, instantaneous rotation, anti-aliasing and graphical grey-map control
- Dual window view, showing original image and modified image
- Operates both on scanned images and on sprite files from any source

Free upgrade to all registered owners of Scan-light

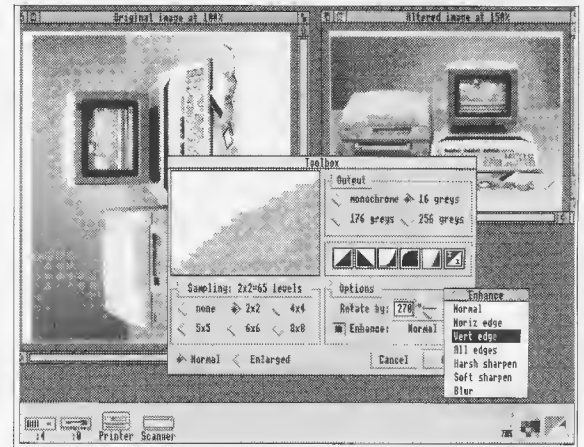
Registered users please call us for your free upgrade. If you have not yet registered, please send us your registration card or other proof of purchase, together with your request for a free upgrade

As faithful followers may recall, the original Scan-Light package was conceived in the days of old, at a time when Arthur ruled the kingdom. But Arthur soon grew old and was duly replaced by RISC-OS, bringing times of abundant software and prosperity for all (except Acorn shareholders).

Although it has undergone some minor revisions to add an amount of RISC-OS compatibility, it remains substantially the same as the original.

Revised software for the improved Scan-Light Plus package is nearing completion as this newsletter goes to press. It is now fully RISC-OS compatible for consistency with other Archimedes software. However, it has improvements far more significant than this, providing image enhancement facilities unrivalled in the Archimedes world.

Images can come from several different sources: scanners, digitisers, paint programs, etc. and Scan-Light Plus is designed to cope with them all. It can even support different types of scanners with minimal problems of interfacing. Advanced sampling techniques allow images to be converted from one set of grey-scales to another. By converting



spare resolution capacity, images can be changed to higher numbers of grey-levels, e.g. from 16 levels to a 256 level picture.

The new software operates with two main windows, one showing the original image and the other showing the image interactively as it is modified. In all cases, the original is retained, so changes are only saved when you're satisfied.

One of the main problems with scanned or digitised images centres around contrast and brightness. Consequently, one of the best features of Scan-Light Plus is its ability to adjust contrast and brightness, using an interactive grey-map edit tool. This enables fine control of all intensities within an image, according to the number of grey-shades present. Special effects such as negatives and posterising can also be achieved.

No compromise has been made over speed of operation; the program is written in ARM Assembly language, and you can't go faster than that. Image rotation benefits particularly from the speed advantage. !Paint is one of the few programs which can rotate images, but it makes watching grass grow seem positively exciting! As an example, we rotated the 160K screen image pictured above by a simple 90 degrees. This took Paint an astonishing 12 minutes, compared with under a second taken by Scan-Light Plus.

The effects of cumulative distortion to images can be very destructive. When rotating an image by an amount other than 90 degrees the pixels are modified. If you rotate it back to its original angle, it will have become distorted in the process. However, Scan-Light Plus always acts upon the original image, so no cumulative errors can occur, no matter how many rotations you apply to the same image.

Scan-Light Junior retails at £189 + VAT
Scan-Light A4 retails at £399 + VAT

Acorn User Show

See us at the BBC Acorn User Show

The most important show this year for Archimedes users will undoubtedly be the BBC Acorn User Show, to be held in September. As always, it looks set to be the major launch venue for new products from a range of vendors.

At Computer Concepts we have been working for many months to complete Impression 2 for its major debut at the Acorn User Show. If at all possible, we will have finished product on sale, and even hope to be giving away free software upgrades to registered Impression owners. Bring along a note of your serial number and, all being well, you can take away your upgrade.

Other products will be on display in their current stages of development. We're working on a range of products, all of which will be on demonstration at the show. Now's your chance to see all of them together in operation, and to compare them with offerings from other manufacturers.

Our technical support staff and programmers will be available on the

stand to demonstrate products and answer your questions. Sorry, but there'll be no scantily clad ladies handing out leaflets - you'll have to go to the Motor Show for that!

What's on display ?

Impression 2
Impression Junior
LaserDirect
LaserDirect Hi-Res
Equasor
Scan-Light Plus
New fonts

Where ?

Westminster Exhibition Centre, Elverton Street, London SW1.

When ?

7th - 9th September 1990

Opening times:-

Friday 7th, 12 noon - 7pm
Saturday 8th, 10am - 6pm

Impression

Upgrade Summary

- All Impression documents can be loaded into Impression 2
- Multiple frame selection, cut, copy and paste
- Effects menu - allows quick style definition for occasional use
- New frame type for rapid creation of headers, footers and other repeating items
- Instant rotation of graphics by any angle in one-degree steps
- Hierarchical font menus list variations under a single menu entry
- Much faster frame selection
- Page rulers round the window
- Grouping of frames
- Conditional page - prevents undesirable page breaks
- Internal frame inset margin
- Automatic saving of user, abbreviation, and hyphenation dictionaries when quitting
- Blinking cursor option for improved visibility
- Local ruler - can be applied to a selected region
- Chapter and page numbering in upper or lower case roman
- Instant drag and pan of graphics
- Custom frame borders can be created in !Draw and imported into Impression 2
- Improved printing in draft (character) mode
- No limit on the number of fonts in the font directory
- Scroll window with key short-cuts
- Key short-cuts shown on menus
- Shows 'modified' asterisk on title bar, according to RISC-OS convention
- Enhanced print options
- Up to 61 grey levels shown on screen by dithering
- Numeric entry of margins and tabs for greater accuracy and consistency

Ever since the first version of Impression we have been working to improve existing facilities and to add new ones. When we first released Impression we hoped that we had produced a bug-free program with all the features necessary at the targeted level. That's what we hoped - but after being nearly ten years in the business we knew the inevitability of bugs and the need for new features!

So we made a promise to provide a free upgrade to version 1.1, intended as a relatively minor upgrade, just to ensure that after the first few months of use, any bugs which had appeared would be fixed, and any new features which were desperately needed could be added. However, we should have remembered how difficult it is to *stop* adding features once we start. The upshot of this is that bug-fixes were implemented and released piecemeal, ending at the current 1.07, which is really what we intended as the promised version 1.1

Rather than honour a promise to provide a 1.1 upgrade, we are instead offering to upgrade every registered user to version 2 software. This goes far beyond our promise, providing a large range of advanced new features.

There are so many enhancements and new features that we can't possibly describe them all here. Of course if you already have Impression, you'll see all the features when you get your free upgrade. We expect Impression 2 and your free upgrades to be available to registered customers quoting a serial number at the Acorn User Show, but please check availability before you come specially!

Upgrading to Impression 2

The free software upgrade can be supplied to any registered owner of Impression. This free upgrade consists of a disc and notes detailing the differences. However, full packages of Impression 2 will contain additional fonts which were not included with the original Impression, but the price of Impression 2 will rise to £169 + VAT. As a special offer, for just £20 + VAT registered users can obtain an extended upgrade containing:-

- A new manual to fit the existing ring binder
- The new Pembroke font, including regular, italic, bold and bold italic variations, PLUS a new Dingbats font
- Outline compatible system fonts
- New Clip art and updated utilities

You can obtain a free upgrade if you are registered on our database simply by phoning and quoting your name and Impression serial number. Alternatively, quote a credit card number or send a cheque for £20 + VAT if you would like the complete upgrade including manual and fonts.

If you are not registered, please complete your registration card and return it to us. If you have lost your registration card, just send us proof of purchase and a note of the serial number, name and address, together with the order. Remember, only registered users are entitled to benefits beyond those guaranteed by your statutory rights, such as upgrades, technical advice and, not to be forgotten, free issues of *The Archimedeian*.

We plan to make upgrades available from our stand at the Acorn User Show, subject to successful completion within the available time. If you intend to visit only to collect an upgrade, please check availability first - we'd hate you to be disappointed! Upgrade priority at the show will be to users who are already registered on our database.

Impression 2 Features

First, a few words of caution. As features are added to a program, it gets bigger. Impression 2 is therefore larger and requires more memory than the previous version, although still considerably less than any of its competitors. It is possible that some documents which loaded in the original version may be too large to load with Impression 2.

At this stage the increased memory requirement is not terribly severe, but we would like to take this opportunity to warn that requirements will continue to rise in the future. All software suppliers enhance their programs and they will all require more memory as time goes on. Increasing your range of fonts and utilities will also exacerbate the problem.

Compatibility

Documents created in previous versions can be loaded straight into Impression 2, retaining the complete layout. However, as is usual for major upgrades, files saved cannot be loaded into earlier versions.

Multiple frame selection

One of the most significant enhancements is the ability to select and operate upon several frames at the same time. Just select the first frame as usual, then Shift-click on others. You can then drag, cut, copy or paste the entire set of frames in one action.

III

Multiple selection will greatly increase productivity, allowing whole sets of related text and graphics frames to be moved from one position to another, and even from document to document by copying and pasting.

Grouping of frames

A selection of multiple frames can now be grouped such that it is treated as a single item. Drag, cut, copy and paste operations will be applied to the whole group.

Grouping has many uses, primarily allowing related items to remain together. Grouping a large headline with the columns of text to which it relates permits the whole story to be moved as one unit.

Effects menu

Although the style system in Impression is uniquely powerful, especially for long documents, there are times when it can be unnecessarily tedious to define styles for 'one-off' cases.

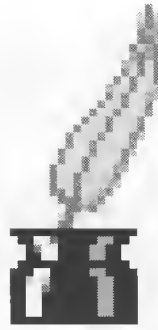
As the Impression manual says, it is poor design to have a document containing many different type designs and sizes. Indeed the Impression style system deliberately encourages the use of a consistent set of styles throughout a document.

Impression 2 provides a shortcut to style definition, in the form of a completely new Effects menu. This lets any text effect be applied to any region of text directly, without having to define a style. For example it is possible to select a word and set it to 24pt size, or to any particular font directly.

Since implementing the effects menu we have made it easier for users to make a mess of the document. It is now very easy to use lots of different effects all over the document and only realise later that this was probably a mistake, and that a style would have been better. With this in mind we have made it possible for effects to be changed into styles.

Instant rotation of graphics

Fast rotation of graphics, originally part of the development work on Scan-Light Plus, is incorporated in Impression 2. Not only does it rotate Draw and Sprite files, instantly, but it also uses a screen dithering technique to enhance display quality. It is now possible to see grey-level and colour sprites in monochrome modes and to obtain near-perfect smooth shading in colour screen modes. For example, 16 colour screen modes can now represent 61 grey-levels. Rotation in Impression 2 is so fast that you can point and drag to rotate in real time.



New repeating frame type

A new type of frame has been implemented specifically for items which need to be repeated on two or more pages, such as headers and footers. A frame can be created on any page and will automatically appear in the same position on following pages.

Local rulers

Just as Effects have been provided as a means to quick style changes without defining styles, so too have local rulers been provided to avoid the need to define a style for one-off use. Any area can be selected and new ruler settings applied. This makes it much easier to include occasional tables of figures and the like.

Hierarchical font menus

As it becomes more usual to have a large number of fonts, the length of the font menu is also getting far too long. In readiness for even greater numbers of fonts, we now use hierarchical font menus. This lists only one name for a font family in the main menu list, with a sub-menu listing the variations. So for example, Pembroke would be listed in the main menu, but the variations *medium*, *medium italic*, *bold* and *bold italic* would be listed in a sub-menu.

As a further enhancement, the limit on the number of fonts in the font directory has now been removed - you can have as many as you want (or as many as you can afford).

Fonts are a major growth area for Archimedes DTP in the coming year. We have been working to increase the number of fonts available at reasonable cost and can now offer three new ones. See the back page for further details.

Text font	
AvantG	↕
BookMan	↕
Corpus	↕
Greek	↕
Homerton	↕
NewHall	↕
Pembroke	↕
Portrhouse	↕
Selwyn	↕
√ Trinity	↕
	Pembroke
	Bold
	Bold.Italic
	Medium
	Medium.Italic

Impression Junior

If your needs are for basic DTP and word processing, Impression Junior offers a simple alternative

Impression 2 offers a vast array of facilities for the widest possible range of publishing and word processing needs. However, not all users need such a high level of sophistication.

If your needs are for little more than a word processor with some page layout and graphics facilities, it may be that Impression Junior is sufficient.

Impression 2 sells at £169, whereas Impression Junior is just £89.95. So if price is your main concern, Junior fits the bill.

What's the difference ?

Impression Junior looks and feels very much like Impression, but with fewer menu options and overall simplification throughout.

In choosing what features it should have, we cut out those which were complicated or only applicable to advanced page layout and professional publishing. If you just want an advanced word processor, you won't be disappointed with Impression Junior. Listed below are some of the major differences between Junior and Impression 2.

- Simplified Master page system.
- Basic printing options only: no pamphlet, collated, reverse, right/left only, no picture options.
- Manual hyphenation only, no automatic hyphenation.
- In-memory operation only - the maximum document size is restricted to available memory.
- Greatly simplified styles.
- Limited attributes only - no double underline, strike-out, rule-offs, tab leading.
- Limited colour control - no CMYK and HSV colour control systems.
- No abbreviation expansion.
- Limited facilities for long documents - no automatic contents or index generation.
- Simplified spelling check options.
- Just one simple window per document.
- Simplified preferences, alter frame, info, alter graphic dialogue boxes.

We aim to have Impression Junior ready for release at the Acorn User Show.



Hints & Tips * Hints & Tips

This selection of hints and tips is confined to Impression and has been gathered from recent months of telephone calls and letters to the Computer Concepts' technical support engineers. It reflects a broad range of topics and, dare we say it, levels of user's knowledge! To these we have added some hints and tips which we think will prove useful.

In future issues we would like to include answers and hints on other Computer Concepts' Archimedes products and welcome your suggestions by letter, addressed to "The Editor".

Save Your Phone Bill ... Read the Manual

We know that the Impression manual doesn't make the most interesting bed-time reading, but it's worth taking the time to read it nonetheless.

You'd be amazed at the number of letters and phone calls we get which are clearly answered in the manual! It's a waste of your time and your phone bill calling us with these questions. But it wastes technical support resources too, and that means less time for genuine problems. So please, before you call us for support, make sure you have checked the relevant sections of the manual.

Sometimes a problem comes to light after the manual has been printed. Such problems are usually not directly related to our software, but if we keep being asked then we try to provide information anyway. Hints and Tips which are not in the manual can be found in a document called !Hints on Impression disc 2. Please read this briefly, but then check it again when a problem arises. It's often the case that maybe weeks later you'll encounter one of the problems described, but you're likely to have forgotten the answer.

Some of the more commonly asked questions are covered below. Some of these have appeared in the !Hints file of recently purchased copies of Impression, but we still receive a lot of questions on these same topics.

6

Unwanted line breaks

Sometimes it is undesirable to break a line between certain pairs of words, or symbols. Usually Impression is liable to split words at any space character, but in circumstances where you wish to avoid it you can instead insert a *hard space*. This looks just like an ordinary space, but will never permit a line break. To enter one, position the cursor where it should be, hold down the Alt key and press the Space key.

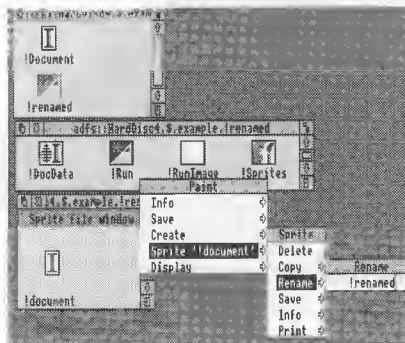
What is the new SuperSample module?

When the !Fonts directory is double-clicked on for the first time it causes two modules to be automatically loaded. One is called FontManager and the other is SuperSample. The FontManager supercedes and replaces the one present in the RISC OS ROMs. The other new module, SuperSample, can be seen at the bottom of the module list. This is just part of the enhancements to font handling which Acorn provided as an update - this is of no direct use to you - it has no interesting commands to play with, but please don't delete it!

Document renaming

If you use the rename option on the filer window to rename an Impression document, the usual icon will be replaced by the standard application icon.

This is due to the way Impression documents are stored, with an Impression Icon named the same as the document when saved. This icon will only appear if its name matches the document name, so if you rename the document, you will also have to rename the icon. You can do this by first holding down the shift key and double clicking on the document, which opens the document directory and shows the files within. Then double-click on the !Sprite file which will cause it to be loaded into !Paint where you can rename it to match the new document name. Alternatively, it's much easier to load the document into Impression and then save it with the new filename.



Creating a custom setup for your own printer

Inside each printer driver, accessed by holding down the shift key and double clicking on the printer driver application, there is a file called PrData. This contains details such as default paper sizes and can be examined or changed by loading it into a text editor such as !Edit.

The file also contains two sequences called job_epilogue and job_prologue which enable commands to be sent automatically to the printer before and after printing. By editing the file you can create your own customised actions. One example of its use is to set the printer's form length for the size of paper in use. The codes for this and many other settings can usually be found in your printer's manual.

Printing on A4 paper

At the bottom of each page Impression sends a form feed command to the printer. This causes the printer to advance the paper feed to where it expects the start of the next sheet to be. Printers with sheet feeders are generally easy to handle, since their page size is not so critical. However, most dot-matrix printers are set as they leave the factory to expect continuous stationery with pages 11" long. In this state, the printer will advance to complete an 11" section when given a form feed command. If A4 paper is installed, having a length of 11.7", printing will be out of phase with the page start.

Some printers have a small switch to set, indicating page length. For others it is necessary to send an instruction code.

Referring back to the previous hint, form length on a Panasonic KXP1081 printer can be set by modifying the PrData file in !PrinterDM, entering: `job_prologue = "<27>C<70>"` This sets page length to 70 lines, which at the standard 6 lines per inch spacing will provide the correct size. Check in your printer manual for the codes relevant to the printer in use.

Hints & Tips * Hints & Tips

Linking frames

There seems to be some confusion over the linked frame features of Impression, making them worthy of explanation.

Linking text frames:- When some text has to continue across more than one frame, you don't have to treat them as separate stories. Instead, you can link the frames together in any desired order, and Impression will automatically flow a story from frame to frame. To create a series of linked frames, first create new frames in the required positions (although you can of course move and resize them later). Then click in the first frame to select it and Adjust-Click in the next frame in the required order. Continue to Adjust Click in each subsequent frame to add it to the linking order. Now, when you click in the first frame and type, or otherwise enter text, it will automatically overflow from one frame to the next.

Note that you cannot add a frame already containing text to a different linked series. If in doubt, create a new frame or even a new set of frames, then you can be sure they're empty. One slight difficulty is that you cannot easily identify the linking order of frames. Just about the only way to see what you've linked together is to flow some text in and see! This doesn't usually pose a problem in operation.

Graphics Frames:- Few users seem to be aware of - and even less make use of - Impression's feature which enables a form of linking of graphics frames.

Two or more graphics frames can be linked by the same method as text frames: select click in one and then Adjust-Click in the second blank frame, and so on. What this achieves is to display a *copy* of the first frame's graphic in the second and subsequent frames. This is not only convenient for duplicated graphics, but can also make considerable savings on disc space and memory, since only one copy of the graphic exists. The alternative is to copy a whole frame and its contents, but this is just a waste of time if all are to be based on the same graphic.

Each linked copy can have its own independent aspect ratio, x/y offset, and scale. If a new graphic is put into the first frame, all of the linked frames will instantly show the same. This is a great time saver for repeating items, making it really quick and easy to change your mind at a later stage. As an example, each triangle graphic used as a page number holder in this newsletter comes from just two pictures - one for the left and one for the right, but there are fourteen of them shown in total. This saves on space and makes it easy to change in a later issue.

Adjust clicking

It's often the case that the most useful little tricks are the least known, and making full use of the Adjust button certainly falls into this category.

Adjust clicking on a dialogue box button or menu option will apply the operation, but won't remove the dialogue box or menu. For example, you can select a piece of text and bring up the style menu, then Adjust click on one style after another, seeing each applied without having to bring up the menu every time.

If you want to set the widths of two frames to the same amount, you can select the first frame, bring up the Alter frame dialogue, and enter the width. But now instead of Select-clicking on the OK button, Adjust-click on it. The change takes effect, but the dialogue remains on screen. Now click on the second frame, and the dialogue updates to show the corresponding settings. Now you can make changes to that frame, and then others if you wish.

When copying frames from one page to another, and they need to be in the same position, bring up the Alter frame dialogue box, click in the original frame, make a note of the x/y measurements, then click into the pasted frame and change the measurements to match. If you now Adjust click on the OK button the changes will be made, but the dialogue remains. So you can click on the next frame on the original page, note the measurements, then apply them to the corresponding pasted frame, and so on. Scaling the view to approximately 25% allows more frames to be seen, and clicking between the two doesn't involve scrolling.

Saving disc space

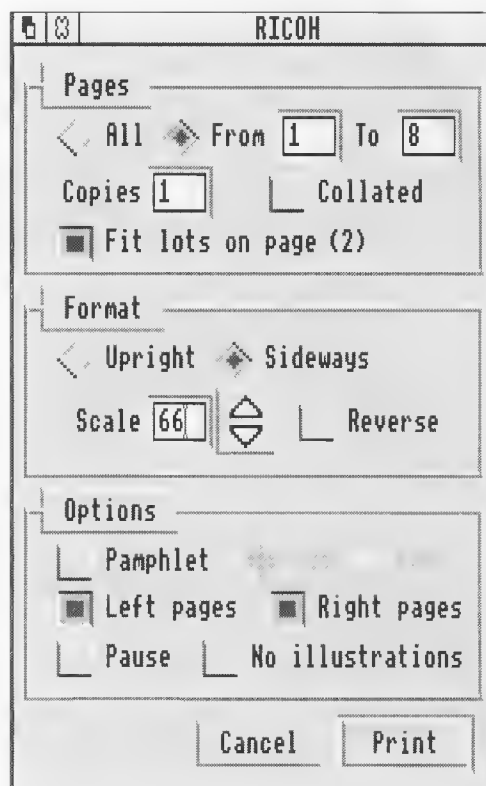
If you use the same document for a lot of letters, you can make use of the 'Save as text' option to save storage space.

Set up a document as a template file with the basics of your letter structure such as the date, address, salutations etc. and load it each time a letter is required. Once the letter has been entered and printed, save just the contents with the Save text option, ensuring that the 'with styles' option is on. This keeps the text of the letter on disc, without duplicating the basic template every time. To start a new letter at this point, just delete the text.

The archived text of a letter can be easily retrieved at a later date. To do this, open your default letter template, locate the text of the letter to be loaded and drag it into the main text frame of your letter.

Printing side-by-side

To print an A4 document side by side (A5) on an A4 page requires print dialogue settings:- fit lots on page, scaling 66%, Sideways, as shown below:-



This is all that is necessary for a multiple page document. However, it takes a little more effort to print multiple copies of a single page document on a single sheet. You will need to create a new page which is a copy of the first. If it contains only text in the normal master page frame then mark the text and copy it, maybe using a 'force to next page' command. If however, it is a more complicated page then the frames from the first page will need copying and pasting one by one to the new page. See the earlier item about Adjust clicking for a time saving way to copy frames from page to page, whilst maintaining the same position. Once the page has been copied, set the print dialogue options as already described and print.

Note: (a) entering 2 in the Copies box, selecting the Sideways option, and scaling to 66% will *not* give two copies of the same page side-by-side. Instead it will print two single sheets with a centered A5 page on each. (b) The Impression 2 multiple frame selection feature will permit all of the frames to be copied in a single operation. (c) Impression 2 has an option for printing multiple copies of a page on the same sheet.

Outlining Fonts

A good selection of fonts is essential to the production of attractive documents, and the days of struggling with a few basic fonts on the Archimedes are well and truly at an end.

When personal computers first started to be used for output of 'typeset quality' documents, traditional typesetters laughed at the idea, pointing to the extremely limited range of fonts and poor type quality as the reasons for their scorn.

Events soon overtook the die-hard traditional typesetters who quickly found themselves losing work to the few members of the industry with sufficient vision to embrace the new technology.

At the forefront were Adobe Systems, creators of the revolutionary PostScript page description language. Adobe PostScript provided the environment for traditional type designers to implement their fonts at low cost for use on small desktop publishing systems. Within just a few short years the industry has been turned on its head.

Adobe cornered the market, building a secret encryption into their fonts so that no other pretender to the throne could understand and use their technology. But in a sudden turnabout last year, Adobe's position became threatened by the likes of BitStream, offering an even wider range of fonts of arguably superior quality.

The supremacy of Adobe fonts came from their encrypted 'hinting' mechanism. A straightforward rendition of a character outline at high resolution, such as that achieved on a professional typesetting machine at 1,270 dpi gives a perfectly smooth character outline, as you can see on this page. But at lower resolutions, such as 300 dpi achieved by most laser printers, it is difficult to avoid a rough jagged appearance at smaller character sizes. Methods which optimise the placing of dots on such awkward points are called 'hinting'. The Adobe hinting

methods used in their 'Type 1' fonts are still the best around.

Other font designers and providers now have wide ranges of fonts available in an Adobe 'Type 1' compatible format. For example, BitStream offer over one thousand fonts to choose from! However Acorn use their own proprietary hinting system which is unfortunately not compatible with this industry standard 'Type 1' format, hence the scarcity of fonts in the Acorn format.

It is important now for the Archimedes market to gain legitimate access to as many professional fonts as possible, and to this end we are now able to offer three new Archimedes outline fonts - equivalent to well-known traditional fonts - and intend to offer a much wider range in future.

Each font pack is supplied as a set, ready to load and print. Available from Computer Concepts and our dealers at £29 +VAT per pack.

AvantG Book
AvantG Book Oblique
AvantG Demi
AvantG Demi Oblique
AvantG Book
AvantG Book Oblique
AvantG Demi
AvantG Demi Oblique
AvantG Book
AvantG Book Oblique
AvantG Demi
AvantG Demi Oblique

Pembroke Medium
Pembroke Medium Italic
Pembroke Bold
Pembroke Bold Italic
Pembroke Medium
Pembroke Medium Italic
Pembroke Bold
Pembroke Bold Italic
Pembroke Medium
Pembroke Medium Italic
Pembroke Bold
Pembroke Bold Italic

BookM Light
BookM Light Italic
BookM Demi
BookM Demi Italic
BookM Light
BookM Light Italic
BookM Demi
BookM Demi Italic
BookM Light
BookM Light Italic
BookM Demi
BookM Demi Italic



Computer Concepts Ltd

Gaddesden Place, Hemel Hempstead Herts HP2 6EX
Tel 0442 63933 Fax 0442 231632

The Archimedean is produced by Computer Concepts Ltd. and issued free of charge to registered owners of their products. If you have purchased one of our Archimedes products and have not received your copy, your registration may not have been received (complete the registration card and return it to us, or send us a note of your package serial number(s) and your current address.)

Production

This issue of the Archimedean was created in Impression and completed in the final stages with Impression 2, using an Archimedes with 2MB RAM and a 20MB hard disc. All proofing and layout checks were output through LaserDirect. Final artwork was created by linking the Archimedes to a Linotronic 300 imagesetter running a PostScript RIP interface, outputting direct from Impression 2 with the PostScript Printer Driver, creating negative film. To maintain the highest quality, all photographs were converted to halftones and manually stripped into position using conventional methods, prior to making litho plates and printing.